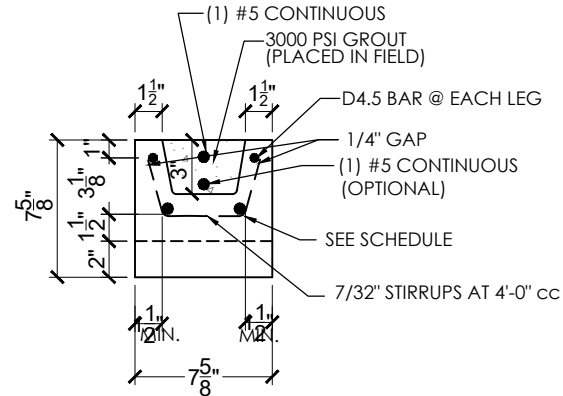
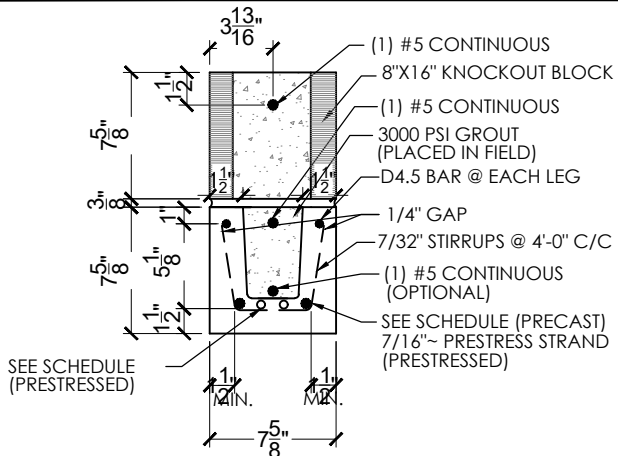


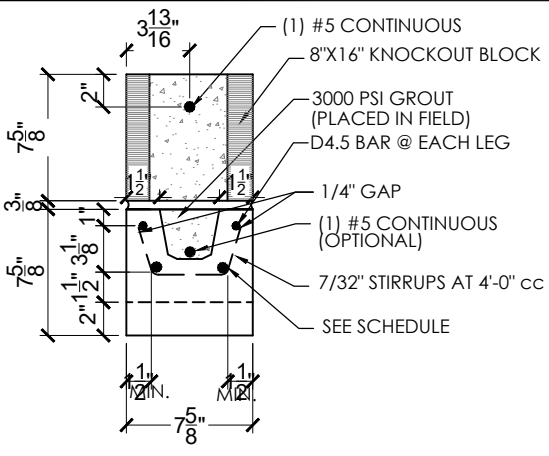
TYPICAL LINTEL 8"x8" SECTION



TYPICAL LINTEL 8"x8" RECESSED SECTION



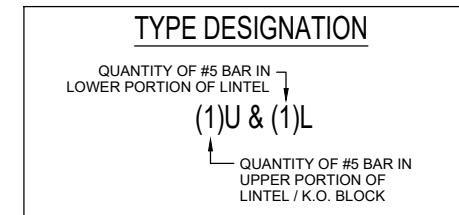
TYPICAL COMPOSITE LINTEL SECTION



TYPICAL COMPOSITE RECESS LINTEL SECTION

**GENERAL NOTES:**

- 1.) CODES
  - 1.1 FLORIDA BUILDING CODE 8th EDITION, 2023 RESIDENTIAL SECTIONS R402.2 & R606.
  - 1.2 FLORIDA BUILDING CODE, 8th EDITION, 2023 BUILDING SECTIONS 1901.2 & 2107.
  - 1.3 BUILDING CODE REQUIREMENTS FOR REINFORCED CONCRETE (ACI 318-19).
  - 1.4 BUILDING CODE REQUIREMENTS FOR MASONRY STRUCTURES (TMS 402-16).
  - 1.5 SPECIFICATIONS REQUIREMENTS FOR MASONRY STRUCTURES (TMS 602-16).
  - 1.6 AMERICAN SOCIETY OF CIVIL ENGINEERS MINIMUM DESIGN LOADS FOR BUILDINGS AND OTHER STRUCTURES (ASCE 7-22).
- 2.) CONCRETE:
  - 2.1 CONCRETE COMPRESSIVE STRENGTH AT 28 DAYS:
    - 2.1.1 PRE-CAST WITH STANDARD REINFORCEMENT - 4,000PSI
    - 2.1.2 PRE-CAST WITH PRESTRESS REINFORCEMENT - 6,000PSI
    - 2.1.3 GROUT PER ASTM C476 f'c=3,000PSI WITH MAXIMUM 3/8" AGGREGATE AND 8" TO 11" SLUMP.
  - 2.2 REINFORCING BARS:
    - 2.2.1 STEEL PLACED IN PRE-CAST LINTEL AT TIME OF FABRICATION ASTM A615 (GRADE 60).
    - 2.2.2 STEEL IN LINTEL AND KNOCKOUT BLOCK (PLACED IN FIELD) ASTM A615 (GRADE 40).
  - 2.3 PRESTRESS STANDS ASTM A416 7-WIRE, STRESS RELIEVED 270KSI.
  - 2.4 DETAIL REINFORCEMENT IN ACCORDANCE WITH ACI 315.
  - 2.5 CONCRETING OPERATIONS SHALL COMPLY WITH ACI STANDARDS.
- 3) MASONRY:
  - 3.1 CONCRETE MASONRY UNITS (CMU) SHALL CONFORM TO ASTM C-90, NORMAL WEIGHT WITH MINIMUM NET AREA COMPRESSIVE STRENGTH 2,000PSI.
  - 3.2 MORTAR SHALL CONFORM TO ASTM C-270 TYPE "M" OR "S".
  - 3.3 FULL MORTAR JOINTS ARE REQUIRED.
  - 3.4 MINIMUM AGGREGATE 28-DAY COMPRESSIVE STRENGTH OF CMU AND MORTAR SHALL NOT BE LESS THAN f'm = 2,000 PSI. MASONRY STRENGTH SHALL BE ESTABLISHED BY THE "UNIT STRENGTH METHOD" OR, ALTERNATIVELY BY THE "PRISM TEST METHOD" WHERE UNIT STRENGTH METHOD REQUIREMENTS HAVE NOT BEEN MET.
- 4) STRUCTURAL:
  - 4.1 SAFE LOAD VALUES ARE BASED ON LINTELS HAVING A BEARING OF 8" (WITH A MINIMUM ACCEPTABLE BEARING OF 4" FOR FILLED LINTELS AND 6 1/2" FOR UNFILLED LINTELS IN DIRECTION OF SPAN PER TMS 402-16 SECTION 4.3.4).
  - 4.2 SAFE LOAD VALUES ARE BASED ON RATIONAL DESIGN ANALYSIS PER ACI 318 AND TMS 402.
  - 4.3 DESIGNER MAY EVALUATE CONCENTRATED LOADS FROM THE SAFE LOAD TABLES BY CALCULATING MAXIMUM RESISTING MOMENT AND SHEAR AT d DISTANCE AWAY FROM THE FACE OF THE SUPPORT.
  - 4.4 LINTELS THAT ARE GREATER THAN 14'-0" CLEAR SPAN MUST BE PROVIDED TEMPORARY SUPPORT AND NOT BE REMOVED UNTIL TWO (2) DAYS AFTER GROUT PLACEMENT.
  - 4.5 FOR LINTEL LENGTH AT 6'-6" OR GREATER, VERTICAL CELL FILLED SOLID WITH GROUT AND MINIMUM ONE (1) #5 VERTICAL REBAR IS REQUIRED AT EACH END OF THE LINTEL.
  - 4.6 FOR COMPOSITE LINTEL HEIGHTS NOT SHOWN, USE SAFE LOAD FROM NEXT LOWER HEIGHT SHOWN.



**Samuel A. Greenberg**, State of Florida, Professional Engineer, License No. 34245

This item has been digitally signed and sealed by **Samuel A. Greenberg, PE** the date shown using a Digital Signature (date is in the coded seal).

Printed copies of this document are not considered signed and sealed And the SHA authentication code must be verified on any electronic copies.

 6423 RUBIA CIRCLE APOLLO BEACH - FLORIDA - 33812 PHONE - (813) 917 1524    SA@DANSCO.COM	GENERAL NOTES & DETAILS 8" LINTEL	
	 3855 N.E. 35th Street Ocala, FL 34479 PH. (352) 629-9788	
© 2023 THESE DRAWINGS AND DESIGNS ARE THE JOINT PROPERTY OF DANSCO ENGINEERING, P.A. AND THE CLIENT ON THIS PROJECT. ANY REPRODUCTION OR UNAUTHORIZED USE IS PROHIBITED.	<input type="checkbox"/> SAMUEL A. GREENBERG, P.E. #34245	SHT. NO. <b>SK1</b> of 11

TABLE No. 1  
REINFORCING SCHEDULE & LOAD CAPACITIES  
SAFE WORKING LOAD (plf)  
8" x 8" PRECAST LINTELS

TOTAL LINTEL LENGTH	CLEAR SPAN	LINTEL TYPE	BOTTOM REINF.	TOP REINF.	GRAVITY SAFE LOAD			UPLIFT SAFE LOAD	
					PLAIN	(1)U & (0)L	(1)U & (1)L	(1)U & (0)L (1)U & (1)L	(2)U & (1)L
2'-10"	1'-6"	PRECAST	(2) #3	(2) D4.5	6087	8574	8574	9766	10000
3'-6"	2'-2"	PRECAST	(2) #3	(2) D4.5	2628	4109	4109	4860	4860
4'-0"	2'-8"	PRECAST	(2) #3	(2) D4.5	1838	2947	2947	3417	3417
4'-6"	3'-2"	PRECAST	(2) #3	(2) D4.5	1411	2294	2294	2630	2630
4'-8"	3'-4"	PRECAST	(2) #3	(2) D4.5	1309	2134	2134	2442	2442
5'-4"	4'-0"	PRECAST	(2) #3	(2) D4.5	1014	1669	1669	1896	1896
5'-10"	4'-6"	PRECAST	(2) #4	(2) D4.5	855	1477	1477	1622	1622
6'-4"	5'-0"	PRECAST	(2) #4	(2) D4.5	746	1292	1292	1393	1416
6'-6"	5'-2"	PRECAST	(2) #4	(2) D4.5	715	1240	1240	1312	1358
6'-8"	5'-4"	PRECAST	(2) #4	(2) D4.5	687	1192	1192	1238	1304
7'-6"	6'-2"	PRECAST	(2) #5	(2) D4.5	566	1013	1013	945	1089
7'-8"	6'-4"	PRECAST	(2) #5	(2) D4.5	547	980	980	899	1054
8'-0"	6'-8"	PRECAST	(2) #5	(2) D4.5	514	921	921	815	990
8'-4"	7'-0"	PRECAST	(2) #5	(2) D4.5	485	868	868	742	932
9'-4"	8'-0"	PRECAST	(2) #5	(2) D4.5	413	740	740	572	794
10'-6"	9'-2"	PRECAST	(2) #5	(2) D4.5	351	630	630	435	675
11'-4"	10'-0"	PRECAST	(2) #5	(2) D4.5	317	568	568	364	609
12'-0"	10'-8"	PRECAST	(2) #5	(2) D4.5	293	526	526	318	565
12'-6"	11'-2"	PRECAST	(2) #5	(2) D4.5	278	499	499	288	535
13'-4"	12'-0"	PRECAST	(2) #5	(2) D4.5	255	458	458	246	491
14'-0"	12'-8"	PRECAST	(2) #5	(2) D4.5	240	430	430	218	453

N.R.- NOT RECOMMENDED

TABLE No. 2  
REINFORCING SCHEDULE & LOAD CAPACITIES  
SAFE WORKING LOAD (plf)  
8" x 16" PRECAST LINTELS

TOTAL LINTEL LENGTH	CLEAR SPAN	LINTEL TYPE	BOTTOM REINF.	TOP REINF.	GRAVITY SAFE LOAD		UPLIFT SAFE LOAD	
					(1)U & (0)L	(1)U & (1)L	(1)U & (0)L (1)U & (1)L	(2)U & (1)L
2'-10"	1'-6"	PRECAST	(2) #3	(2) D4.5	10000*	10000*	10000*	10000*
3'-6"	2'-2"	PRECAST	(2) #3	(2) D4.5	7005*	7005*	7005*	7005*
4'-0"	2'-8"	PRECAST	(2) #3	(2) D4.5	10000	10000	10000	10000
4'-6"	3'-2"	PRECAST	(2) #3	(2) D4.5	8221	10000	7549	10000
4'-8"	3'-4"	PRECAST	(2) #3	(2) D4.5	7544	10000	6927	10000
5'-4"	4'-0"	PRECAST	(2) #3	(2) D4.5	5523	6496	5070	7112
5'-10"	4'-6"	PRECAST	(2) #4	(2) D4.5	5155	5155	4123	5478
6'-4"	5'-0"	PRECAST	(2) #4	(2) D4.5	4210	4210	3415	4449
6'-6"	5'-2"	PRECAST	(2) #4	(2) D4.5	3967	3967	3218	4186
6'-8"	5'-4"	PRECAST	(2) #4	(2) D4.5	3750	3750	3038	3952
7'-6"	6'-2"	PRECAST	(2) #5	(2) D4.5	2964	2964	2325	3084
7'-8"	6'-4"	PRECAST	(2) #5	(2) D4.5	2840	2840	2213	2953
8'-0"	6'-8"	PRECAST	(2) #5	(2) D4.5	2620	2620	2010	2722
8'-4"	7'-0"	PRECAST	(2) #5	(2) D4.5	2431	2431	1832	2524
9'-4"	8'-0"	PRECAST	(2) #5	(2) D4.5	1996	1996	1418	2068
10'-6"	9'-2"	PRECAST	(2) #5	(2) D4.5	1647	1647	1085	1704
11'-4"	10'-0"	PRECAST	(2) #5	(2) D4.5	1462	1462	911	1512
12'-0"	10'-8"	PRECAST	(2) #5	(2) D4.5	1341	1341	799	1385
12'-6"	11'-2"	PRECAST	(2) #5	(2) D4.5	1261	1261	727	1303
13'-4"	12'-0"	PRECAST	(2) #5	(2) D4.5	1147	1147	625	1185
14'-0"	12'-8"	PRECAST	(2) #5	(2) D4.5	1069	1069	557	1104

N.R.- NOT RECOMMENDED

\* LINTEL MEETS DEEP BEAM CRITERIA



**Samuel A. Greenberg**, State of Florida, Professional Engineer,  
License No. **34245**

This item has been digitally signed and sealed by  
**Samuel A. Greenberg**, PE the date shown using a Digital  
Signature (date is in the coded seal).

Printed copies of this document are not considered signed and sealed  
And the SHA authentication code must be verified on any  
electronic copies.

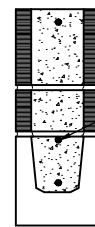
 6423 RUBIA CIRCLE APOLLO BEACH - FLORIDA - 33512 PHONE - (813) 917 1524    SA@DANSO.COM	8" x 8" AND 8" x 16" PRECAST LINTEL TABLES	
	 3855 N.E. 35th Street Ocala, FL 34479 PH. (352) 629-9788	
© 2023 THESE DRAWINGS AND DESIGNS ARE THE JOINT PROPERTY OF DANSCO ENGINEERING, P.A. AND THE CLIENT ON THIS PROJECT. ANY REPRODUCTION OR UNAUTHORIZED USE IS PROHIBITED.	<input type="checkbox"/> SAMUEL A. GREENBERG, P.E. #34245	SHT. NO. <b>SK2</b> of 11

TABLE No. 3  
REINFORCING SCHEDULE & LOAD CAPACITIES  
SAFE WORKING LOADS (PLF)  
8" x 20" LINTELS

TOTAL LINTEL LENGTH	CLEAR SPAN	LINTEL TYPE	BOTTOM REINF.	TOP REINF.	GRAVITY SAFE LOAD		UPLIFT SAFE LOAD	
					(1)U & (0)L	(1)U & (1)L	(1)U & (0)L (1)U & (1)L	(2)U & (1)L
2'-10"	1'-6"	PRECAST	(2) #3	(2) D4.5	10000*	10000*	10000*	10000*
3'-6"	2'-2"	PRECAST	(2) #3	(2) D4.5	8479*	8479*	8479*	8479*
4'-0"	2'-8"	PRECAST	(2) #3	(2) D4.5	6487*	6487*	6487*	6487*
4'-6"	3'-2"	PRECAST	(2) #3	(2) D4.5	10000	10000	9780	10000
4'-8"	3'-4"	PRECAST	(2) #3	(2) D4.5	9756	10000	8975	10000
5'-4"	4'-0"	PRECAST	(2) #3	(2) D4.5	7145	10000	6571	10000
5'-10"	4'-6"	PRECAST	(2) #4	(2) D4.5	8970	8970	5345	9587
6'-4"	5'-0"	PRECAST	(2) #4	(2) D4.5	6812	6812	4429	7206
6'-6"	5'-2"	PRECAST	(2) #4	(2) D4.5	6304	6304	4175	6653
6'-8"	5'-4"	PRECAST	(2) #4	(2) D4.5	5867	5867	3941	6178
7'-6"	6'-2"	PRECAST	(2) #5	(2) D4.5	4381	4381	3018	4546
7'-8"	6'-4"	PRECAST	(2) #5	(2) D4.5	4163	4163	2872	4316
8'-0"	6'-8"	PRECAST	(2) #5	(2) D4.5	3786	3786	2610	3919
8'-4"	7'-0"	PRECAST	(2) #5	(2) D4.5	3470	3470	2380	3588
9'-4"	8'-0"	PRECAST	(2) #5	(2) D4.5	2771	2771	1844	2858
10'-6"	9'-2"	PRECAST	(2) #5	(2) D4.5	2238	2238	1413	2303
11'-4"	10'-0"	PRECAST	(2) #5	(2) D4.5	1965	1965	1188	2020
12'-0"	10'-8"	PRECAST	(2) #5	(2) D4.5	1788	1788	1042	1838
12'-6"	11'-2"	PRECAST	(2) #5	(2) D4.5	1675	1675	949	1720
13'-4"	12'-0"	PRECAST	(2) #5	(2) D4.5	1513	1513	817	1554
14'-0"	12'-8"	PRECAST	(2) #5	(2) D4.5	1404	1404	729	1441

N.R.- NOT RECOMMENDED  
\* LINTEL MEETS DEEP BEAM CRITERIA

NOTE #1: (1) #4 MIN. REQUIRED FOR DEEP BEAM ONLY



NOTE #1

DETAIL

**Samuel A. Greenberg**, State of Florida, Professional Engineer,  
License No. **34245**

This item has been digitally signed and sealed by  
**Samuel A. Greenberg**, PE the date shown using a Digital  
Signature (date is in the coded seal).

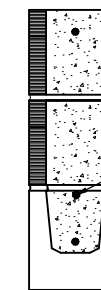
Printed copies of this document are not considered signed and sealed  
And the SHA authentication code must be verified on any  
electronic copies.

TABLE No. 4  
REINFORCING SCHEDULE & LOAD CAPACITIES  
SAFE WORKING LOADS (PLF)  
8" x 24" LINTELS

TOTAL LINTEL LENGTH	CLEAR SPAN	LINTEL TYPE	BOTTOM REINF.	TOP REINF.	GRAVITY SAFE LOAD		UPLIFT SAFE LOAD	
					(1)U & (0)L	(1)U & (1)L	(1)U & (0)L (1)U & (1)L	(2)U & (1)L
2'-10"	1'-6"	PRECAST	(2) #3	(2) D4.5	10000*	10000*	10000*	10000*
3'-6"	2'-2"	PRECAST	(2) #3	(2) D4.5	9952*	9952*	9952*	9952*
4'-0"	2'-8"	PRECAST	(2) #3	(2) D4.5	7689*	7689*	7689*	7689*
4'-6"	3'-2"	PRECAST	(2) #3	(2) D4.5	6237*	6237*	6237*	6237*
4'-8"	3'-4"	PRECAST	(2) #3	(2) D4.5	5897*	5897*	5897*	5897*
5'-4"	4'-0"	PRECAST	(2) #3	(2) D4.5	8769	10000	8074	10000
5'-10"	4'-6"	PRECAST	(2) #4	(2) D4.5	10000	10000	6569	10000
6'-4"	5'-0"	PRECAST	(2) #4	(2) D4.5	10000	10000	5444	10000
6'-6"	5'-2"	PRECAST	(2) #4	(2) D4.5	9835	10000	5131	10000
6'-8"	5'-4"	PRECAST	(2) #4	(2) D4.5	9574	9574	4845	9641
7'-6"	6'-2"	PRECAST	(2) #5	(2) D4.5	6523	6523	3712	6773
7'-8"	6'-4"	PRECAST	(2) #5	(2) D4.5	6122	6122	3533	6348
8'-0"	6'-8"	PRECAST	(2) #5	(2) D4.5	5450	5450	3210	5640
8'-4"	7'-0"	PRECAST	(2) #5	(2) D4.5	4909	4909	2929	5070
9'-4"	8'-0"	PRECAST	(2) #5	(2) D4.5	3776	3776	2270	3886
10'-6"	9'-2"	PRECAST	(2) #5	(2) D4.5	2966	2966	1741	3045
11'-4"	10'-0"	PRECAST	(2) #5	(2) D4.5	2568	2568	1465	2633
12'-0"	10'-8"	PRECAST	(2) #5	(2) D4.5	2317	2317	1286	2374
12'-6"	11'-2"	PRECAST	(2) #5	(2) D4.5	2158	2158	1171	2210
13'-4"	12'-0"	PRECAST	(2) #5	(2) D4.5	1934	1934	1009	1980
14'-0"	12'-8"	PRECAST	(2) #5	(2) D4.5	1785	1785	901	1826

N.R.- NOT RECOMMENDED  
\* LINTEL MEETS DEEP BEAM CRITERIA

NOTE #1: (1) #4 MIN. REQUIRED FOR DEEP BEAM ONLY



NOTE #1

DETAIL



8" x 20" AND 8" x 24" PRECAST LINTEL TABLES

**DE** DANSCO  
ENGINEERING, P.A.  
6423 RUBIA CIRCLE  
APOLLO BEACH - FLORIDA - 33512  
PHONE - (813) 911 1524    SA@DANSO.COM

Marion Masonry Materials of Ocala, LLC  


3855 N.E. 35th Street  
Ocala, FL 34479  
PH. (352) 629-9788

© 2023 THESE DRAWINGS AND DESIGNS ARE THE  
JOINT PROPERTY OF DANSCO ENGINEERING, P.A. AND  
THE CLIENT ON THIS PROJECT. ANY REPRODUCTION OR  
UNAUTHORIZED USE IS PROHIBITED.

SAMUEL A. GREENBERG, P.E. #34245

SHT. NO.

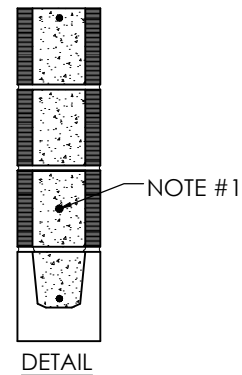
SK3 of 11

TABLE No. 5  
REINFORCING SCHEDULE & LOAD CAPACITIES  
SAFE WORKING LOADS (PLF)  
8" x 32" LINTELS

TOTAL LINTEL LENGTH	CLEAR SPAN	LINTEL TYPE	BOTTOM REINF.	TOP REINF.	GRAVITY SAFE LOAD		UPLIFT SAFE LOAD	
					(1)U & (0)L	(1)U & (1)L	(1)U & (0)L (1)U & (1)L	(2)U & (1)L
2'-10"	1'-6"	PRECAST	(2) D4.5	(2) D4.5	10000*	10000*	10000*	10000*
3'-6"	2'-2"	PRECAST	(2) #3	(2) D4.5	10000*	10000*	10000*	10000*
4'-0"	2'-8"	PRECAST	(2) #3	(2) D4.5	10000*	10000*	10000*	10000*
4'-6"	3'-2"	PRECAST	(2) #3	(2) D4.5	8234*	8234*	8234*	8234*
4'-8"	3'-4"	PRECAST	(2) #3	(2) D4.5	7774*	7774*	7774*	7774*
5'-4"	4'-0"	PRECAST	(2) #3	(2) D4.5	6400*	6400*	6400*	6400*
5'-10"	4'-6"	PRECAST	(2) #4	(2) D4.5	5750*	5750*	5750*	5750*
6'-4"	5'-0"	PRECAST	(2) #4	(2) D4.5	10000	10000	7476	10000
6'-6"	5'-2"	PRECAST	(2) #4	(2) D4.5	10000	10000	7048	10000
6'-8"	5'-4"	PRECAST	(2) #4	(2) D4.5	10000	10000	6655	10000
7'-6"	6'-2"	PRECAST	(2) #5	(2) D4.5	10000	10000	5101	10000
7'-8"	6'-4"	PRECAST	(2) #5	(2) D4.5	10000	10000	4856	9723
8'-0"	6'-8"	PRECAST	(2) #5	(2) D4.5	10000	10000	4413	8878
8'-4"	7'-0"	PRECAST	(2) #5	(2) D4.5	10000	10000	4027	8084
9'-4"	8'-0"	PRECAST	(2) #5	(2) D4.5	7085	7085	3124	6298
10'-6"	9'-2"	PRECAST	(2) #5	(2) D4.5	5107	5107	2398	4864
11'-4"	10'-0"	PRECAST	(2) #5	(2) D4.5	4250	4250	2019	4115
12'-0"	10'-8"	PRECAST	(2) #5	(2) D4.5	3743	3743	1774	3630
12'-6"	11'-2"	PRECAST	(2) #5	(2) D4.5	3433	3433	1617	3320
13'-4"	12'-0"	PRECAST	(2) #5	(2) D4.5	3014	3014	1395	2881
14'-0"	12'-8"	PRECAST	(2) #5	(2) D4.5	2745	2745	1247	2588

N.R.- NOT RECOMMENDED  
\* LINTEL MEETS DEEP BEAM CRITERIA

NOTE #1: (1) #4 MIN. REQUIRED FOR DEEP BEAM ONLY



**Samuel A. Greenberg**, State of Florida, Professional Engineer,  
License No. **34245**

This item has been digitally signed and sealed by  
**Samuel A. Greenberg**, PE the date shown using a Digital  
Signature (date is in the coded seal).

Printed copies of this document are not considered signed and sealed  
And the SHA authentication code must be verified on any  
electronic copies.



**DE** DANSCO  
ENGINEERING, P.A.  
6423 RUBIA CIRCLE  
APOLLO BEACH - FLORIDA - 33512  
PHONE - (813) 917 1524    8AM@DEPE@AOL.COM

8" x 32" PRECAST LINTEL TABLE

*Marion Masonry Materials of Ocala, LLC*  
**MM**  
3855 N.E. 35th Street  
Ocala, FL 34479  
PH. (352) 629-9788

© 2023 THESE DRAWINGS AND DESIGNS ARE THE  
JOINT PROPERTY OF DANSCO ENGINEERING, P.A. AND  
THE CLIENT ON THIS PROJECT. ANY REPRODUCTION OR  
UNAUTHORIZED USE IS PROHIBITED.

SAMUEL A. GREENBERG, P.E. #34245

SHT. NO.

SK4 of 11

TABLE No. 6  
REINFORCING SCHEDULE & LOAD CAPACITIES  
SAFE WORKING LOADS (PLF)  
8" x 8" PRESTRESSED LINTELS

TOTAL LINTEL LENGTH	CLEAR SPAN	LINTEL TYPE	BOTTOM REINF.	GRAVITY SAFE LOAD		UPLIFT SAFE LOAD	
				(1)U & (0)L	(1)U & (1)L	(1)U & (0)L (1)U & (1)L	(2)U & (1)L
14'-8"	13'-4"	Prestressed	(2) 7/16"~ STRAND & (2) #5	418	418	230	446
15'-4"	14'-0"	Prestressed	(2) 7/16"~ STRAND & (2) #5	379	379	210	407
17'-4"	16'-0"	Prestressed	(2) 7/16"~ STRAND & (2) #5	288	288	163	317
19'-4"	18'-0"	Prestressed	(2) 7/16"~ STRAND & (2) #5	224	224	131	254
20'-0"	18'-8"	Prestressed	(2) 7/16"~ STRAND & (2) #5	207	207	122	237
21'-4"	20'-0"	Prestressed	(2) 7/16"~ STRAND & (2) #5	177	177	107	208
22'-0"	20'-8"	Prestressed	(2) 7/16"~ STRAND & (2) #5	164	164	100	195
24'-0"	22'-8"	Prestressed	(2) 7/16"~ STRAND & (2) #5	132	132	84	163

N.R.- NOT RECOMMENDED

TABLE No. 7  
REINFORCING SCHEDULE & LOAD CAPACITIES  
SAFE WORKING LOADS (PLF)  
8" x 16" PRESTRESSED LINTELS

TOTAL LINTEL LENGTH	CLEAR SPAN	LINTEL TYPE	BOTTOM REINF.	GRAVITY SAFE LOAD		UPLIFT SAFE LOAD	
				(1)U & (0)L	(1)U & (1)L	(1)U & (0)L (1)U & (1)L	(2)U & (1)L
14'-8"	13'-4"	Prestressed	(2) 7/16"~ STRAND & (2) #5	1299	1299	456	893
15'-4"	14'-0"	Prestressed	(2) 7/16"~ STRAND & (2) #5	1182	1182	417	820
17'-4"	16'-0"	Prestressed	(2) 7/16"~ STRAND & (2) #5	910	910	324	639
19'-4"	18'-0"	Prestressed	(2) 7/16"~ STRAND & (2) #5	719	719	259	511
20'-0"	18'-8"	Prestressed	(2) 7/16"~ STRAND & (2) #5	668	668	242	477
21'-4"	20'-0"	Prestressed	(2) 7/16"~ STRAND & (2) #5	580	580	212	418
22'-0"	20'-8"	Prestressed	(2) 7/16"~ STRAND & (2) #5	542	542	199	393
24'-0"	22'-8"	Prestressed	(2) 7/16"~ STRAND & (2) #5	446	446	167	329

N.R.- NOT RECOMMENDED

TABLE No. 8  
REINFORCING SCHEDULE & LOAD CAPACITIES  
SAFE WORKING LOADS (PLF)  
8" x 20" PRESTRESSED LINTELS

TOTAL LINTEL LENGTH	CLEAR SPAN	LINTEL TYPE	BOTTOM REINF.	GRAVITY SAFE LOAD		UPLIFT SAFE LOAD	
				(1)U & (0)L	(1)U & (1)L	(1)U & (0)L (1)U & (1)L	(2)U & (1)L
14'-8"	13'-4"	Prestressed	(2) 7/16"~ STRAND & (2) #5	1893	1893	587	1137
15'-4"	14'-0"	Prestressed	(2) 7/16"~ STRAND & (2) #5	1724	1724	536	1058
17'-4"	16'-0"	Prestressed	(2) 7/16"~ STRAND & (2) #5	1330	1330	417	824
19'-4"	18'-0"	Prestressed	(2) 7/16"~ STRAND & (2) #5	1053	1053	334	659
20'-0"	18'-8"	Prestressed	(2) 7/16"~ STRAND & (2) #5	979	979	312	615
21'-4"	20'-0"	Prestressed	(2) 7/16"~ STRAND & (2) #5	852	852	273	540
22'-0"	20'-8"	Prestressed	(2) 7/16"~ STRAND & (2) #5	797	797	257	507
24'-0"	22'-8"	Prestressed	(2) 7/16"~ STRAND & (2) #5	659	659	215	425

N.R.- NOT RECOMMENDED

TABLE No. 9  
REINFORCING SCHEDULE & LOAD CAPACITIES  
SAFE WORKING LOADS (PLF)  
8" x 24" PRESTRESSED LINTELS

TOTAL LINTEL LENGTH	CLEAR SPAN	LINTEL TYPE	BOTTOM REINF.	GRAVITY SAFE LOAD		UPLIFT SAFE LOAD	
				(1)U & (0)L	(1)U & (1)L	(1)U & (0)L (1)U & (1)L	(2)U & (1)L
14'-8"	13'-4"	Prestressed	(2) 7/16"~ STRAND & (2) #5	2345	2345	653	1283
15'-4"	14'-0"	Prestressed	(2) 7/16"~ STRAND & (2) #5	2136	2136	596	1179
17'-4"	16'-0"	Prestressed	(2) 7/16"~ STRAND & (2) #5	1650	1650	464	918
19'-4"	18'-0"	Prestressed	(2) 7/16"~ STRAND & (2) #5	1310	1310	371	735
20'-0"	18'-8"	Prestressed	(2) 7/16"~ STRAND & (2) #5	1219	1219	347	686
21'-4"	20'-0"	Prestressed	(2) 7/16"~ STRAND & (2) #5	1062	1062	304	601
22'-0"	20'-8"	Prestressed	(2) 7/16"~ STRAND & (2) #5	994	994	285	565
24'-0"	22'-8"	Prestressed	(2) 7/16"~ STRAND & (2) #5	824	824	239	473

N.R.- NOT RECOMMENDED

TABLE No. 10  
REINFORCING SCHEDULE & LOAD CAPACITIES  
SAFE WORKING LOADS (PLF)  
8" x 32" PRESTRESSED LINTELS

TOTAL LINTEL LENGTH	CLEAR SPAN	LINTEL TYPE	BOTTOM REINF.	GRAVITY SAFE LOAD		UPLIFT SAFE LOAD	
				(1)U & (0)L	(1)U & (1)L	(1)U & (0)L (1)U & (1)L	(2)U & (1)L
14'-8"	13'-4"	Prestressed	(2) 7/16"~ STRAND & (2) #5	3231	3231	749	1484
15'-4"	14'-0"	Prestressed	(2) 7/16"~ STRAND & (2) #5	2945	2945	683	1355
17'-4"	16'-0"	Prestressed	(2) 7/16"~ STRAND & (2) #5	2280	2280	532	1055
19'-4"	18'-0"	Prestressed	(2) 7/16"~ STRAND & (2) #5	1813	1813	426	844
20'-0"	18'-8"	Prestressed	(2) 7/16"~ STRAND & (2) #5	1688	1688	397	788
21'-4"	20'-0"	Prestressed	(2) 7/16"~ STRAND & (2) #5	1473	1473	348	691
22'-0"	20'-8"	Prestressed	(2) 7/16"~ STRAND & (2) #5	1380	1380	327	649
24'-0"	22'-8"	Prestressed	(2) 7/16"~ STRAND & (2) #5	1147	1147	274	544

N.R.- NOT RECOMMENDED

**Samuel A. Greenberg**, State of Florida, Professional Engineer,  
License No. **34245**

This item has been digitally signed and sealed by  
**Samuel A. Greenberg**, PE the date shown using a Digital  
Signature (date is in the coded seal).

Printed copies of this document are not considered signed and sealed  
And the SHA authentication code must be verified on any  
electronic copies.



**DE** DANSCO  
ENGINEERING, P.A.  
6423 RUBIA CIRCLE  
APOLLO BEACH - FLORIDA - 33512  
PHONE - (813) 911 5241    SA@DANSO.COM

8" x 8", 8" x 16", 8" x 20", 8" x 24" AND 8" x 32" PRESTRESSED LINTEL TABLES

Marion Masonry Materials of Ocala, LLC  
MM  
3855 N.E. 35th Street  
Ocala, FL 34479  
PH. (352) 629-9788

© 2023 THESE DRAWINGS AND DESIGNS ARE THE  
JOINT PROPERTY OF DANSCO ENGINEERING, P.A. AND  
THE CLIENT ON THIS PROJECT. ANY REPRODUCTION OR  
UNAUTHORIZED USE IS PROHIBITED.

SAMUEL A. GREENBERG, P.E. #34245

SHT. NO.

SK5 of 11

TABLE No. 11  
REINFORCING SCHEDULE & LOAD CAPACITIES  
SAFE WORKING LOADS (PLF)  
8" x 6" RECESS PRECAST LINTELS

TOTAL LINTEL LENGTH	CLEAR SPAN	LINTEL TYPE	BOTTOM REINF.	GRAVITY SAFE LOAD		UPLIFT SAFE LOAD	
				(1)U & (0)L	(1)U & (1)L	(1)U & (0)L (1)U & (1)L	(2)U & (1)L
4'-0"	2'-8"	Precast	(2) #3	1962	1546	1879	1879
4'-4"	3'-0"	Precast	(2) #3	1679	1332	1610	1610
4'-8"	3'-4"	Precast	(2) #3	1466	1169	1407	1407
5'-8"	4'-4"	Precast	(2) #4	1039	891	1019	1019
6'-8"	5'-4"	Precast	(2) #4	811	698	789	795
7'-8"	6'-4"	Precast	(2) #5	650	585	571	650
9'-8"	8'-4"	Precast	(2) #5	473	426	334	474

N.R.- NOT RECOMMENDED

TABLE No. 12  
REINFORCING SCHEDULE & LOAD CAPACITIES  
SAFE WORKING LOADS (PLF)  
8" x 14" RECESS PRECAST LINTELS

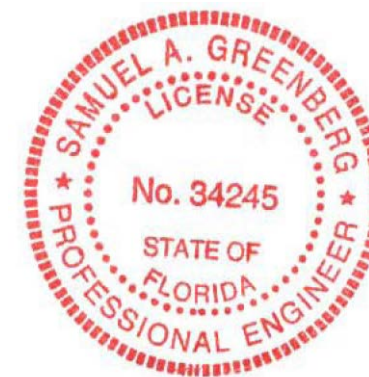
TOTAL LINTEL LENGTH	CLEAR SPAN	LINTEL TYPE	BOTTOM REINF.	GRAVITY SAFE LOAD		UPLIFT SAFE LOAD	
				(1)U & (0)L	(1)U & (1)L	(1)U & (0)L (1)U & (1)L	(2)U & (1)L
4'-0"	2'-8"	Precast	(2) #3	9287	10000	8519	10000
4'-4"	3'-0"	Precast	(2) #3	7664	8487	7030	9654
4'-8"	3'-4"	Precast	(2) #3	6430	6526	5897	7280
5'-8"	4'-4"	Precast	(2) #4	4217	3918	3752	4176
6'-8"	5'-4"	Precast	(2) #4	2941	2758	2587	2916
7'-8"	6'-4"	Precast	(2) #5	2234	2141	1884	2234
9'-8"	8'-4"	Precast	(2) #5	1513	1455	1116	1513

N.R.- NOT RECOMMENDED

**Samuel A. Greenberg**, State of Florida, Professional Engineer,  
License No. **34245**

This item has been digitally signed and sealed by  
**Samuel A. Greenberg**, PE the date shown using a Digital  
Signature (date is in the coded seal).

Printed copies of this document are not considered signed and sealed  
And the SHA authentication code must be verified on any  
electronic copies.



**DE** DANSCO  
ENGINEERING, P.A.  
6423 RUBIA CIRCLE  
APOLLO BEACH - FLORIDA - 33512  
PHONE - (813) 917 1524    SA@GRIPEAOL.COM

© 2023 THESE DRAWINGS AND DESIGNS ARE THE  
JOINT PROPERTY OF DANSCO ENGINEERING, P.A. AND  
THE CLIENT ON THIS PROJECT. ANY REPRODUCTION OR  
UNAUTHORIZED USE IS PROHIBITED.

8" x 6" AND 8" x 14" RECESS PRECAST LINTEL TABLES

Marion Masonry Materials of Ocala, LLC  


3855 N.E. 35th Street  
Ocala, FL 34479  
PH. (352) 629-9788

SAMUEL A. GREENBERG, P.E. #34245

SHT. NO.

SK6 of 11

TABLE No. 13  
SAFE WORKING LATERAL LOADS (PLF) 8" x 8" LINTELS

LINTEL		SAFE LATERAL LOADS (PLF)		LINTEL		SAFE LATERAL LOADS (PLF)	
Total Length	Type	8"x8" PLAIN	8"x8" SOLID	Total Length	Type	8"x8" PLAIN	8"x8" SOLID
2'-10"	Precast	1863	9813	10'-6"	Precast	154	692
3'-6"	Precast	1185	4641	11'-4"	Precast	122	629
4'-0"	Precast	931	3326	12'-0"	Precast	103	586
4'-6"	Precast	767	2592	12'-6"	Precast	91	558
4'-8"	Precast	724	2414	13'-4"	Precast	75	503
5'-4"	Precast	593	1895	14'-0"	Precast	65	454
5'-10"	Precast	504	1608	14'-8"	Prestressed	N.R.	417
6'-4"	Precast	450	1412	15'-4"	Prestressed	N.R.	369
6'-6"	Precast	435	1357	17'-4"	Prestressed	N.R.	257
6'-8"	Precast	420	1306	19'-4"	Prestressed	N.R.	184
7'-6"	Precast	348	1085	20'-0"	Prestressed	N.R.	167
7'-8"	Precast	338	1052	21'-4"	Prestressed	N.R.	139
8'-0"	Precast	321	991	22'-0"	Prestressed	N.R.	127
8'-4"	Precast	305	937	24'-0"	Prestressed	N.R.	100
9'-4"	Precast	222	806				

N.R.- NOT RECOMMENDED

**Samuel A. Greenberg**, State of Florida, Professional Engineer,  
License No. **34245**

This item has been digitally signed and sealed by  
**Samuel A. Greenberg**, PE the date shown using a Digital  
Signature (date is in the coded seal).

Printed copies of this document are not considered signed and sealed  
And the SHA authentication code must be verified on any  
electronic copies.



**DE** DANSCO  
ENGINEERING, P.A.  
6423 RUBIA CIRCLE  
APOLLO BEACH - FLORIDA - 33512  
PHONE - (813) 911 1524    SA@GRIPEAOL.COM

© 2023 THESE DRAWINGS AND DESIGNS ARE THE  
JOINT PROPERTY OF DANSCO ENGINEERING, P.A. AND  
THE CLIENT ON THIS PROJECT. ANY REPRODUCTION OR  
UNAUTHORIZED USE IS PROHIBITED.

8" x 8" PRECAST/PRESTRESSED LINTEL TABLE

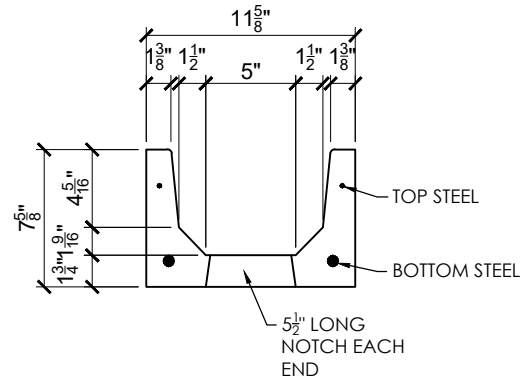
*Marion Masonry Materials of Ocala, LLC*  


3855 N.E. 35th Street  
Ocala, FL 34479  
PH. (352) 629-9788

SAMUEL A. GREENBERG, P.E. #34245

SHT. NO.

SK7 of 11



**TYPICAL 12-INCH LINTEL  
PRECAST CONCRETE**

**GENERAL NOTES:**


- 1.) CODES
  - 1.1 FLORIDA BUILDING CODE 8th EDITION, 2023 RESIDENTIAL SECTIONS R402.2 & R606.
  - 1.2 FLORIDA BUILDING CODE, 8th EDITION, 2023 BUILDING SECTIONS 1901.2 & 2107.
  - 1.3 BUILDING CODE REQUIREMENTS FOR REINFORCED CONCRETE (ACI 318-19).
  - 1.4 BUILDING CODE REQUIREMENTS FOR MASONRY STRUCTURES (TMS 402-16).
  - 1.5 SPECIFICATIONS REQUIREMENTS FOR MASONRY STRUCTURES (TMS 602-16).
  - 1.6 AMERICAN SOCIETY OF CIVIL ENGINEERS MINIMUM DESIGN LOADS FOR BUILDINGS AND OTHER STRUCTURES (ASCE 7-22).
- 2.) CONCRETE:
  - 2.1 CONCRETE COMPRESSIVE STRENGTH AT 28 DAYS:
    - 2.1.1 PRE-CAST WITH STANDARD REINFORCEMENT - 6,000PSI
    - 2.1.2 PRE-CAST WITH PRESTRESS REINFORCEMENT - 6,000PSI
    - 2.1.3 GROUT PER ASTM C476 f'c=3,000PSI WITH MAXIMUM 3/8" AGGREGATE AND 8" TO 11" SLUMP.
  - 2.2 REINFORCING BARS:
    - 2.2.1 STEEL PLACED IN PRE-CAST LINTEL AT TIME OF FABRICATION ASTM A615 (GRADE 60).
    - 2.2.2 STEEL IN LINTEL AND KNOCKOUT BLOCK (PLACED IN FIELD) ASTM A615 (GRADE 40).
  - 2.3 PRESTRESS STANDS ASTM A416 7-WIRE, STRESS RELIEVED 270KSI.
  - 2.4 DETAIL REINFORCEMENT IN ACCORDANCE WITH ACI 315.
  - 2.5 CONCRETING OPERATIONS SHALL COMPLY WITH ACI STANDARDS.
- 3) MASONRY:
  - 3.1 CONCRETE MASONRY UNITS (CMU) SHALL CONFORM TO ASTM C-90, NORMAL WEIGHT WITH MINIMUM NET AREA COMPRESSIVE STRENGTH 2,000PSI.
  - 3.2 MORTAR SHALL CONFORM TO ASTM C-270 TYPE "M" OR "S".
  - 3.3 FULL MORTAR JOINTS ARE REQUIRED.
  - 3.4 MINIMUM AGGREGATE 28-DAY COMPRESSIVE STRENGTH OF CMU AND MORTAR SHALL NOT BE LESS THAN f'm = 2,000 PSI. MASONRY STRENGTH SHALL BE ESTABLISHED BY THE "UNIT STRENGTH METHOD" OR, ALTERNATIVELY BY THE "PRISM TEST METHOD" WHERE UNIT STRENGTH METHOD REQUIREMENTS HAVE NOT BEEN MET.
- 4) STRUCTURAL:
  - 4.1 SAFE LOAD VALUES ARE BASED ON LINTELS HAVING A BEARING OF 8" (WITH A MINIMUM ACCEPTABLE BEARING OF 4" FOR FILLED LINTELS AND 6 1/2" FOR UNFILLED LINTELS IN DIRECTION OF SPAN PER TMS 402-16 SECTION 4.3.4).
  - 4.2 SAFE LOAD VALUES ARE BASED ON RATIONAL DESIGN ANALYSIS PER ACI 318 AND TMS 402.
  - 4.3 DESIGNER MAY EVALUATE CONCENTRATED LOADS FROM THE SAFE LOAD TABLES BY CALCULATING MAXIMUM RESISTING MOMENT AND SHEAR AT d DISTANCE AWAY FROM THE FACE OF THE SUPPORT.
  - 4.4 LINTELS THAT ARE GREATER THAN 14'-0" CLEAR SPAN MUST BE PROVIDED TEMPORARY SUPPORT AND NOT BE REMOVED UNTIL TWO (2) DAYS AFTER GROUT PLACEMENT.
  - 4.5 FOR LINTEL LENGTH AT 6'-6" OR GREATER, VERTICAL CELL FILLED SOLID WITH GROUT AND MINIMUM ONE (1) #5 VERTICAL REBAR IS REQUIRED AT EACH END OF THE LINTEL.
  - 4.6 FOR COMPOSITE LINTEL HEIGHTS NOT SHOWN, USE SAFE LOAD FROM NEXT LOWER HEIGHT SHOWN.



**Samuel A. Greenberg**, State of Florida, Professional Engineer,  
License No. **34245**

This item has been digitally signed and sealed by  
**Samuel A. Greenberg**, PE the date shown using a Digital  
Signature (date is in the coded seal).

Printed copies of this document are not considered signed and sealed  
And the SHA authentication code must be verified on any  
electronic copies.

<b>DE</b> DANSCO ENGINEERING, P.A. 6423 RUBIA CIRCLE APOLLO BEACH - FLORIDA - 33512 PHONE - (813) 917 1524    8AM@DEPE@AOL.COM	8" x 8" PRECAST/PRESTRESSED LINTEL TABLE	
	<i>Marion Masonry Materials of Ocala, LLC</i>  3855 N.E. 35th Street Ocala, FL 34479 PH. (352) 629-9788	
<small>© 2023 THESE DRAWINGS AND DESIGNS ARE THE JOINT PROPERTY OF DANSCO ENGINEERING, P.A. AND THE CLIENT ON THIS PROJECT. ANY REPRODUCTION OR UNAUTHORIZED USE IS PROHIBITED.</small>	<input type="checkbox"/> SAMUEL A. GREENBERG, P.E. #34245	SHT. NO. <b>SK8</b> of 11

**REINFORCING SCHEDULE & LOAD CAPACITIES  
SAFE WORKING LOADS (PLF)  
12" x 8" LINTELS**

LINTEL TOTAL LENGTH	CLEAR SPAN	LINTEL TYPE	BOTTOM REINF.	TOP REINF.	GRAVITY SAFE LOAD			UPLIFT SAFE LOAD	
					PLAIN DETAIL A	(1)U & (0)L DETAIL B	(1)U & (1)L DETAIL C	(1)U & (0)L (1)U & (1)L DETAIL B&C	(2)U & (1)L DETAIL D
2'-10"	1'-6"	PRECAST	(2) #3	(2) D4.5 WIRE	9465	10000	10000	9947	10000
3'-6"	2'-2"	PRECAST	(2) #3	(2) D4.5 WIRE	4087	6826	6826	5792	7785
4'-0"	2'-8"	PRECAST	(2) #3	(2) D4.5 WIRE	2860	4878	4878	4169	5475
4'-6"	3'-2"	PRECAST	(2) #3	(2) D4.5 WIRE	2196	3789	3789	3138	4216
5'-4"	4'-0"	PRECAST	(2) #3	(2) D4.5 WIRE	1580	2755	2755	2098	3041
5'-10"	4'-6"	PRECAST	(2) #3	(2) D4.5 WIRE	1351	2364	2364	1701	2602
6'-4"	5'-0"	PRECAST	(2) #3	(2) D4.5 WIRE	1179	2069	2069	1404	2272
6'-8"	5'-4"	PRECAST	(2) #3	(2) D4.5 WIRE	1086	1909	1909	1246	2094
7'-6"	6'-2"	PRECAST	(2) #5	(2) D4.5 WIRE	883	1658	1658	947	1749
8'-4"	7'-0"	PRECAST	(2) #5	(2) D4.5 WIRE	757	1422	1422	741	1500
9'-4"	8'-0"	PRECAST	(2) #5	(2) D4.5 WIRE	645	1213	1213	567	1161
10'-6"	9'-2"	PRECAST	(2) #5	(2) D4.5 WIRE	549	1032	1032	427	889
11'-4"	10'-0"	PRECAST	(2) #5	(2) #3	496	940	940	354	746
12'-6"	11'-2"	PRECAST	(2) #5	(2) #3	436	826	826	276	595
13'-4"	12'-0"	PRECAST	(2) #5	(2) #3	400	759	759	234	512
14'-0"	12'-8"	PRECAST	(2) #5	(2) #3	376	713	713	206	457
14'-8"	13'-4"	PRECAST	(2) #5	(2) #3	354	672	672	181	409
15'-4"	14'-0"	PRECAST	(2) #5	(2) #3	334	634	634	160	367
17'-4"	16'-0"	PRECAST	(2) #5	(2) #3	280	421	455	110	271

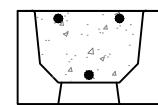
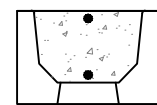
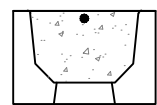
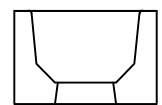
N.R.- NOT RECOMMENDED

**REINFORCING SCHEDULE & LOAD CAPACITIES  
SAFE WORKING LOADS (PLF)  
12" x 16" LINTELS**

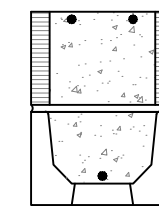
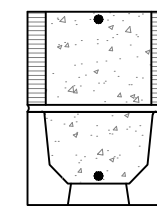
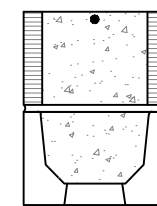
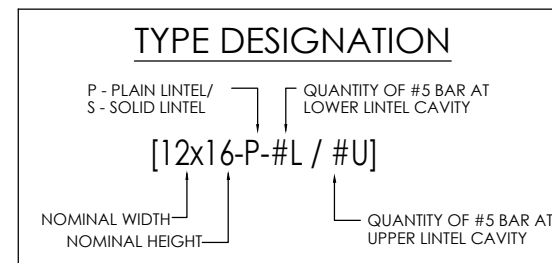
LINTEL TOTAL LENGTH	CLEAR SPAN	LINTEL TYPE	BOTTOM REINF.	TOP REINF.	GRAVITY SAFE LOAD		UPLIFT SAFE LOAD	
					(1)U & (0)L DETAIL E	(1)U & (1)L DETAIL F	(1)U & (0)L (1)U & (1)L DETAIL E&F	(2)U & (1)L DETAIL G
2'-10"	1'-6"	PRECAST	(2) #3	(2) D4.5 WIRE	10000*	10000*	10000*	10000*
3'-6"	2'-2"	PRECAST	(2) #3	(2) D4.5 WIRE	10000*	10000*	10000*	10000*
4'-0"	2'-8"	PRECAST	(2) #3	(2) D4.5 WIRE	10000	10000	10000	10000
4'-6"	3'-2"	PRECAST	(2) #3	(2) D4.5 WIRE	10000	10000	7590	10000
5'-4"	4'-0"	PRECAST	(2) #3	(2) D4.5 WIRE	8321	10000	5087	10000
5'-10"	4'-6"	PRECAST	(2) #3	(2) D4.5 WIRE	6769	8252	4130	8256
6'-4"	5'-0"	PRECAST	(2) #3	(2) D4.5 WIRE	5610	6742	3416	6854
6'-8"	5'-4"	PRECAST	(2) #3	(2) D4.5 WIRE	4992	6006	3036	6102
7'-6"	6'-2"	PRECAST	(2) #5	(2) D4.5 WIRE	4806	4806	2317	4680
8'-4"	7'-0"	PRECAST	(2) #5	(2) D4.5 WIRE	3942	3942	1819	3697
9'-4"	8'-0"	PRECAST	(2) #5	(2) D4.5 WIRE	3237	3237	1400	2870
10'-6"	9'-2"	PRECAST	(2) #5	(2) D4.5 WIRE	2673	2673	1064	2205
11'-4"	10'-0"	PRECAST	(2) #5	(2) #3	2382	2382	888	1859
12'-6"	11'-2"	PRECAST	(2) #5	(2) #3	2056	2056	702	1491
13'-4"	12'-0"	PRECAST	(2) #5	(2) #3	1871	1871	600	1288
14'-0"	12'-8"	PRECAST	(2) #5	(2) #3	1745	1745	531	1152
14'-8"	13'-4"	PRECAST	(2) #5	(2) #3	1633	1633	472	1035
15'-4"	14'-0"	PRECAST	(2) #5	(2) #3	1534	1534	420	934
17'-4"	16'-0"	PRECAST	(2) #5	(2) #3	1296	1296	302	700

N.R.- NOT RECOMMENDED

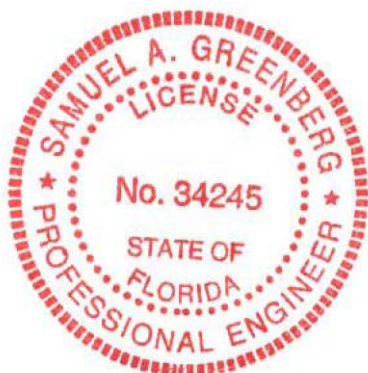
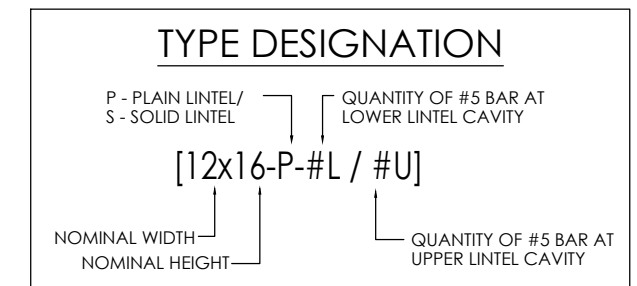
\* LINTEL MEETS DEEP BEAM CRITERIA



DETAIL "A"    DETAIL "B"    DETAIL "C"    DETAIL "D"



DETAIL "E"    DETAIL "F"    DETAIL "G"



**Samuel A. Greenberg**, State of Florida, Professional Engineer,  
License No. **34245**

This item has been digitally signed and sealed by  
**Samuel A. Greenberg**, PE the date shown using a Digital  
Signature (date is in the coded seal).

Printed copies of this document are not considered signed and sealed  
And the SHA authentication code must be verified on any  
electronic copies.

 6423 RUBIA CIRCLE APOLLO BEACH - FLORIDA - 33512 PHONE - (813) 917 1524    SA@GRIPEAOL.COM	8" x 8" PRECAST/PRESTRESSED LINTEL TABLE	
	 3855 N.E. 35th Street Ocala, FL 34479 PH. (352) 629-9788	
© 2023 THESE DRAWINGS AND DESIGNS ARE THE JOINT PROPERTY OF DANSCO ENGINEERING, P.A. AND THE CLIENT ON THIS PROJECT. ANY REPRODUCTION OR UNAUTHORIZED USE IS PROHIBITED.	<input type="checkbox"/> SAMUEL A. GREENBERG, P.E. #34245	SHT. NO. <b>SK9</b> of 11

**REINFORCING SCHEDULE & LOAD CAPACITIES  
SAFE WORKING LOADS (PLF)  
12" x 24" LINTELS**

LINTEL TOTAL LENGTH	CLEAR SPAN	LINTEL TYPE	BOTTOM REINF.	TOP REINF.	GRAVITY SAFE LOAD		UPLIFT SAFE LOAD	
					(1)U & (0)L DETAIL H	(1)U & (1)L DETAIL J	(1)U & (0)L (1)U & (1)L DETAIL H&J	(2)U & (1)L DETAIL K
2'-10"	1'-6"	PRECAST	(2) #3	(2) D4.5 WIRE	10000*	10000*	10000*	10000*
3'-6"	2'-2"	PRECAST	(2) #3	(2) D4.5 WIRE	10000*	10000*	10000*	10000*
4'-0"	2'-8"	PRECAST	(2) #3	(2) D4.5 WIRE	10000*	10000*	10000*	10000*
4'-6"	3'-2"	PRECAST	(2) #3	(2) D4.5 WIRE	9730*	9730*	9730*	9730*
5'-4"	4'-0"	PRECAST	(2) #3	(2) D4.5 WIRE	10000	10000	8084	10000
5'-10"	4'-6"	PRECAST	(2) #3	(2) D4.5 WIRE	10000	10000	6569	10000
6'-4"	5'-0"	PRECAST	(2) #3	(2) D4.5 WIRE	8902	10000	5437	10000
6'-8"	5'-4"	PRECAST	(2) #3	(2) D4.5 WIRE	7925	10000	4834	9729
7'-6"	6'-2"	PRECAST	(2) #5	(2) D4.5 WIRE	10000	10000	3694	7468
8'-4"	7'-0"	PRECAST	(2) #5	(2) D4.5 WIRE	7974	7974	2905	5903
9'-4"	8'-0"	PRECAST	(2) #5	(2) D4.5 WIRE	6131	6131	2242	4588
10'-6"	9'-2"	PRECAST	(2) #5	(2) D4.5 WIRE	4817	4817	1709	3532
11'-4"	10'-0"	PRECAST	(2) #5	(2) #3	4184	4184	1431	2980
12'-6"	11'-2"	PRECAST	(2) #5	(2) #3	3516	3516	1136	2394
13'-4"	12'-0"	PRECAST	(2) #5	(2) #3	3153	3153	973	2071
14'-0"	12'-8"	PRECAST	(2) #5	(2) #3	2911	2911	864	1855
14'-8"	13'-4"	PRECAST	(2) #5	(2) #3	2701	2701	770	1670
15'-4"	14'-0"	PRECAST	(2) #5	(2) #3	2519	2519	689	1508
17'-4"	16'-0"	PRECAST	(2) #5	(2) #3	2090	2090	501	1136

N.R.- NOT RECOMMENDED

\* LINTEL MEETS DEEP BEAM CRITERIA

NOTE #1: (1) #4 MIN. REQUIRED FOR DEEP BEAM ONLY

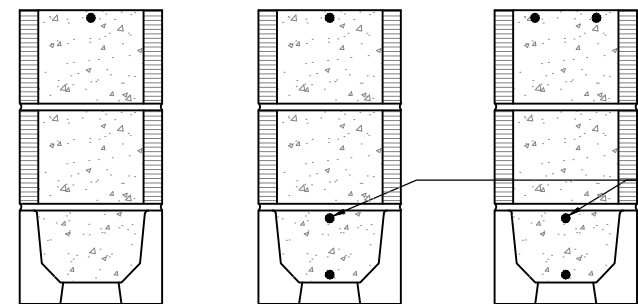
**REINFORCING SCHEDULE & LOAD CAPACITIES  
SAFE WORKING LOADS (PLF)  
12" x 32" LINTELS**

LINTEL TOTAL LENGTH	CLEAR SPAN	LINTEL TYPE	BOTTOM REINF.	TOP REINF.	GRAVITY SAFE LOAD		UPLIFT SAFE LOAD	
					(1)U & (0)L DETAIL L	(1)U & (1)L DETAIL M	(1)U & (0)L (1)U & (1)L DETAIL L&M	(2)U & (1)L DETAIL N
2'-10"	1'-6"	PRECAST	(2) #3	(2) D4.5 WIRE	10000*	10000*	10000*	10000*
3'-6"	2'-2"	PRECAST	(2) #3	(2) D4.5 WIRE	10000*	10000*	10000*	10000*
4'-0"	2'-8"	PRECAST	(2) #3	(2) D4.5 WIRE	10000*	10000*	10000*	10000*
4'-6"	3'-2"	PRECAST	(2) #3	(2) D4.5 WIRE	10000*	10000*	10000*	10000*
5'-4"	4'-0"	PRECAST	(2) #3	(2) D4.5 WIRE	9715*	9715*	9715*	9715*
5'-10"	4'-6"	PRECAST	(2) #3	(2) D4.5 WIRE	8550*	8550*	8550*	8550*
6'-4"	5'-0"	PRECAST	(2) #3	(2) D4.5 WIRE	10000	10000	7459	10000
6'-8"	5'-4"	PRECAST	(2) #3	(2) D4.5 WIRE	10000	10000	6634	10000
7'-6"	6'-2"	PRECAST	(2) #5	(2) D4.5 WIRE	10000	10000	5072	10000
8'-4"	7'-0"	PRECAST	(2) #5	(2) D4.5 WIRE	10000	10000	3992	8114
9'-4"	8'-0"	PRECAST	(2) #5	(2) D4.5 WIRE	10000	10000	3084	6310
10'-6"	9'-2"	PRECAST	(2) #5	(2) D4.5 WIRE	8293	8293	2355	4861
11'-4"	10'-0"	PRECAST	(2) #5	(2) #3	6918	6918	1974	4103
12'-6"	11'-2"	PRECAST	(2) #5	(2) #3	5590	5590	1569	3300
13'-4"	12'-0"	PRECAST	(2) #5	(2) #3	4909	4909	1347	2857
14'-0"	12'-8"	PRECAST	(2) #5	(2) #3	4470	4470	1198	2560
14'-8"	13'-4"	PRECAST	(2) #5	(2) #3	4100	4100	1069	2305
15'-4"	14'-0"	PRECAST	(2) #5	(2) #3	3786	3786	958	2084
17'-4"	16'-0"	PRECAST	(2) #5	(2) #3	3069	3069	700	1573

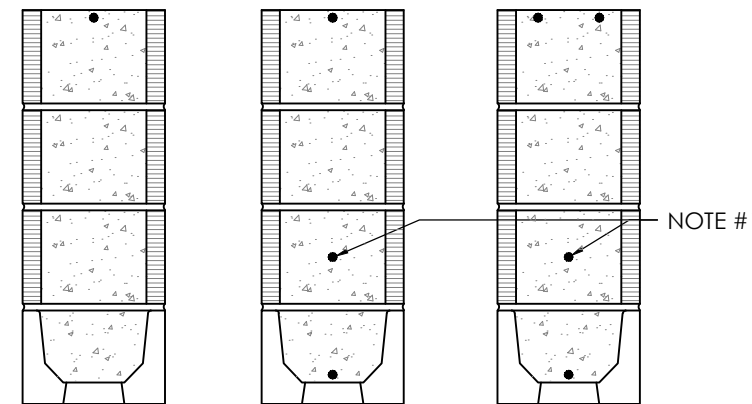
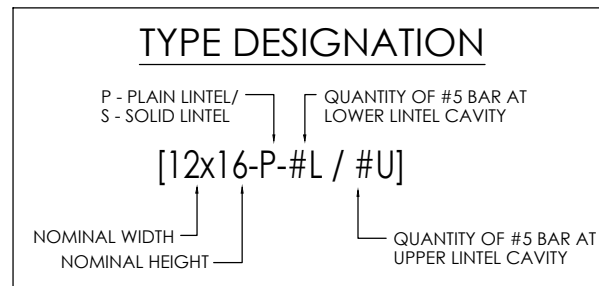
N.R.- NOT RECOMMENDED

\* LINTEL MEETS DEEP BEAM CRITERIA

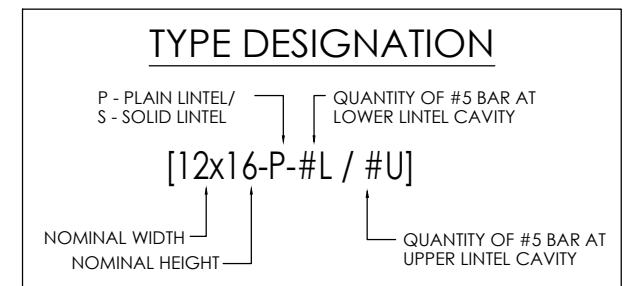
NOTE #1: (1) #4 MIN. REQUIRED FOR DEEP BEAM ONLY



DETAIL "H"      DETAIL "J"      DETAIL "K"



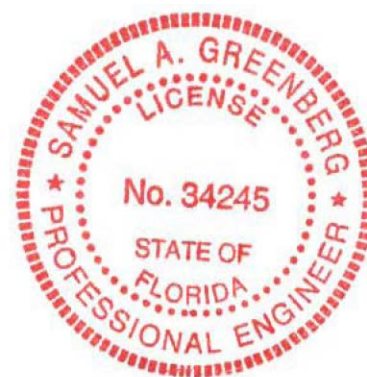
DETAIL "L"      DETAIL "M"      DETAIL "N"



**Samuel A. Greenberg**, State of Florida, Professional Engineer,  
License No. 34245

This item has been digitally signed and sealed by  
**Samuel A. Greenberg**, PE the date shown using a Digital  
Signature (date is in the coded seal).

Printed copies of this document are not considered signed and sealed  
And the SHA authentication code must be verified on any  
electronic copies.



**DE DANSCO**  
ENGINEERING, P.A.  
6423 RUBIA CIRCLE  
APOLLO BEACH - FLORIDA - 33512  
PHONE - (813) 911 1524      SAMS@DEPE.AOL.COM

8" x 8" PRECAST/PRESTRESSED LINTEL TABLE

*Marion Masonry Materials of Ocala, LLC*

**MM**  
3855 N.E. 35th Street  
Ocala, FL 34479  
PH. (352) 629-9788

© 2023 THESE DRAWINGS AND DESIGNS ARE THE  
JOINT PROPERTY OF DANSCO ENGINEERING, P.A. AND  
THE CLIENT ON THIS PROJECT. ANY REPRODUCTION OR  
UNAUTHORIZED USE IS PROHIBITED.

SAMUEL A. GREENBERG, P.E. #34245

SHT. NO.

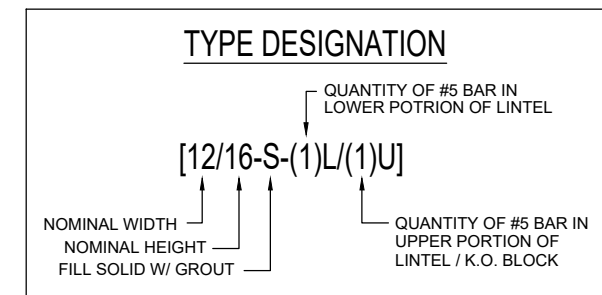
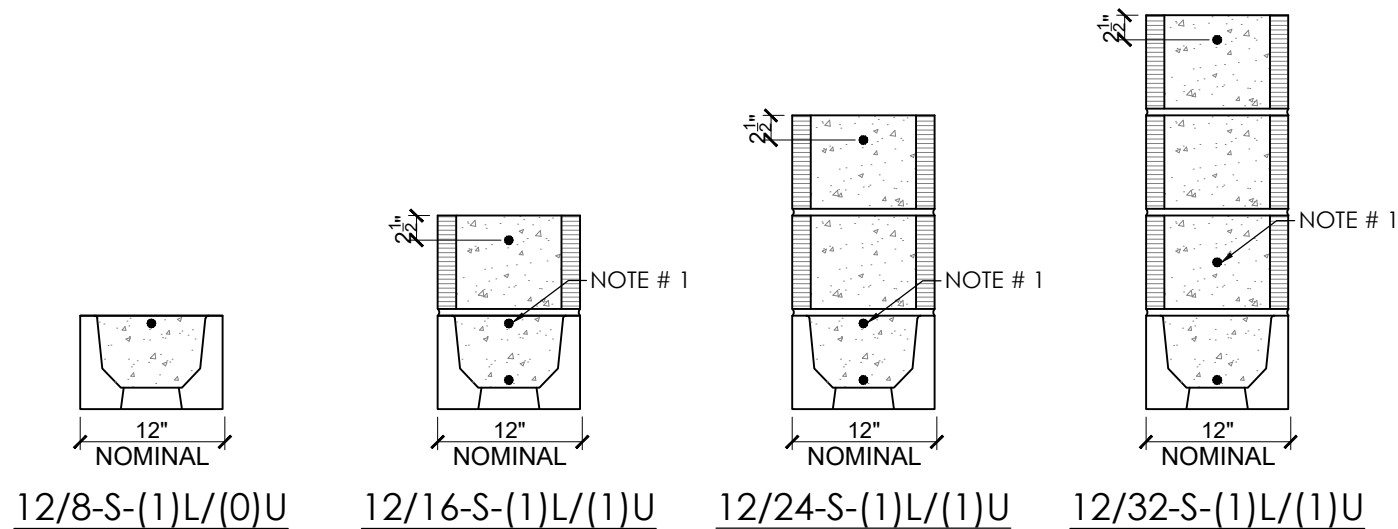
SK10 of 11

LINTEL		12" LINTEL SAFE GRAVITY LOADS (PLF)					
TOTAL LENGTH	CLEAR SPAN	TOP REINF.	BOTTOM REINF.	12/8-S-(2)L	12/16-S-(2)L	12/24-S-(2)L	12/32-S-(2)L
2'-10"	1'-6"	D4.5 WIRE or #2	(2) #3	5445	10000*	10000*	10000*
3'-6"	2'-2"	D4.5 WIRE or #2	(2) #3	4056	8916*	10000*	10000*
4'-0"	2'-8"	D4.5 WIRE or #2	(2) #3	3227	10000	10000*	10000*
4'-6"	3'-2"	D4.5 WIRE or #2	(2) #3	2676	10000	9156*	10000*
4'-8"	3'-4"	D4.5 WIRE or #2	(2) #3	2531	10000	8690*	10000*
5'-4"	4'-0"	D4.5 WIRE or #2	(2) #3	2079	7479	10000	9675*
5'-10"	4'-6"	D4.5 WIRE or #2	(2) #3	1831	6207	10000	8615*
6'-4"	5'-0"	(2) #2	(2) #4	1681	5379	10000	10000
6'-6"	5'-2"	(2) #2	(2) #4	1622	5127	10000	10000
6'-8"	5'-4"	(2) #2	(2) #4	1569	4898	10000	10000
7'-6"	6'-2"	(2) #2	(2) #4	1341	3997	8892	10000
7'-8"	6'-4"	(2) #3	(2) #4	1302	3854	8456	10000
8'-0"	6'-8"	(2) #3	(2) #4	1232	7700	7700	10000
8'-8"	7'-4"	(2) #3	(2) #4	1112	6526	6526	10000
9'-4"	8'-0"	(2) #3	(2) #5	1031	5697	5697	8683
10'-4"	9'-0"	(2) #3	(2) #5	907	4739	4739	8311
11'-4"	10'-0"	(2) #3	(2) #5	808	4051	4051	6837
12'-0"	10'-8"	(2) #3	(2) #5	753	3690	3690	6109
12'-8"	11'-4"	(2) #3	(2) #5	704	3386	3386	5517
13'-4"	12'-0"	(2) #3	(2) #5	661	3127	3127	5026
14'-0"	12'-8"	(2) #3	(2) #5	572	2903	2903	4613
14'-8"	13'-4"	(2) #4	(2) #6	595	2718	2718	4273
15'-8"	14'-4"	(2) #4	(2) #6	516	2416	2416	3829
17'-4"	16'-0"	(2) #4	(2) #6	359	2132	2132	3258
19'-4"	18'-0"	(2) #4	(2) #6	213	1829	1829	2754

\* LINTEL MEETS DEEP BEAM CRITERIA

LINTEL		12" LINTEL SAFE UPLIFT LOADS (PLF)						LATERAL LOADS (PLF)	
TOTAL LENGTH	CLEAR SPAN	TOP REINF.	BOTTOM REINF.	12/8-S-(2)U	12/16-S-(2)U	12/24-S-(2)U	12/32-S-(2)U	12/8-P	12/8-S
2'-10"	1'-6"	NONE	(2) #3	5014	10000	10000	10000	1168	3469
3'-6"	2'-2"	NONE	(2) #3	3779	10000	10000	10000	828	2460
4'-0"	2'-8"	NONE	(2) #3	3033	10000	10000	10000	618	1834
4'-6"	3'-2"	NONE	(2) #3	2532	10000	10000	10000	478	1420
4'-8"	3'-4"	NONE	(2) #3	2400	9867	10000	10000	442	1313
5'-4"	4'-0"	NONE	(2) #3	1986	7268	10000	10000	332	986
5'-10"	4'-6"	NONE	(2) #3	1759	6069	10000	10000	274	815
6'-4"	5'-0"	(2) #2	(2) #4	1641	5210	9427	10000	490	1500
6'-6"	5'-2"	(2) #2	(2) #4	1586	4975	8924	10000	464	1420
6'-8"	5'-4"	(2) #2	(2) #4	1535	4760	8461	10000	440	1346
7'-6"	6'-2"	(2) #2	(2) #4	1322	3916	6607	9187	344	1051
7'-8"	6'-4"	(2) #3	(2) #4	1326	3782	6310	8774	404	1249
8'-0"	6'-8"	(2) #3	(2) #4	1257	3521	5774	8027	370	1143
8'-8"	7'-4"	(2) #3	(2) #4	1140	2980	4887	6754	313	967
9'-4"	8'-0"	(2) #3	(2) #5	1043	2555	4189	5825	348	1111
10'-4"	9'-0"	(2) #3	(2) #5	924	2069	3393	4718	281	900
11'-4"	10'-0"	(2) #3	(2) #5	830	1720	2804	3899	206	743
12'-0"	10'-8"	(2) #3	(2) #5	777	1520	2493	3460	170	661
12'-8"	11'-4"	(2) #3	(2) #5	698	1360	2231	3102	141	591
13'-4"	12'-0"	(2) #3	(2) #5	606	1224	2008	2792	118	532
14'-0"	12'-8"	(2) #3	(2) #5	524	1108	1817	2526	99	481
14'-8"	13'-4"	(2) #4	(2) #6	528	1007	1817	2296	102	786
15'-8"	14'-4"	(2) #4	(2) #6	434	880	1443	2006	N.R.	728
17'-4"	16'-0"	(2) #4	(2) #6	319	716	1174	1632	N.R.	614
19'-4"	18'-0"	(2) #4	(2) #6	214	573	940	1307	N.R.	492

N.R. = NOT RECOMMENDED



NOTE # 1: (1) #4 MIN. REQUIRED FOR DEEP BEAM ONLY



**Samuel A. Greenberg**, State of Florida, Professional Engineer,  
License No. **34245**

This item has been digitally signed and sealed by  
**Samuel A. Greenberg**, PE the date shown using a Digital  
Signature (date is in the coded seal).

Printed copies of this document are not considered signed and sealed  
And the SHA authentication code must be verified on any  
electronic copies.

 6423 RUBIA CIRCLE APOLLO BEACH - FLORIDA - 33512 PHONE - (813) 917 1524    SA@GRIPEAOL.COM	8" x 8" PRECAST/PRESTRESSED LINTEL TABLE	
	 3855 N.E. 35th Street Ocala, FL 34479 PH. (352) 629-9788	
© 2023 THESE DRAWINGS AND DESIGNS ARE THE JOINT PROPERTY OF DANSCO ENGINEERING, P.A. AND THE CLIENT ON THIS PROJECT. ANY REPRODUCTION OR UNAUTHORIZED USE IS PROHIBITED.	<input type="checkbox"/> SAMUEL A. GREENBERG, P.E. #34245	SHT. NO. <b>SK11</b> of 11